

## APPLICATIONS

- Photo Detector, ● Image Scanners

## ABSOLUTE MAXIMUM RATINGS (Ta=25°C)

### INPUT :

- Power Dissipation ..... Pd=100mW
- Reverse Voltage ..... VR=5 V
- Forward Current ..... If=60mA
- Peak Forward Current (tw=100usec.T=10msec.) ..... IFP=1A

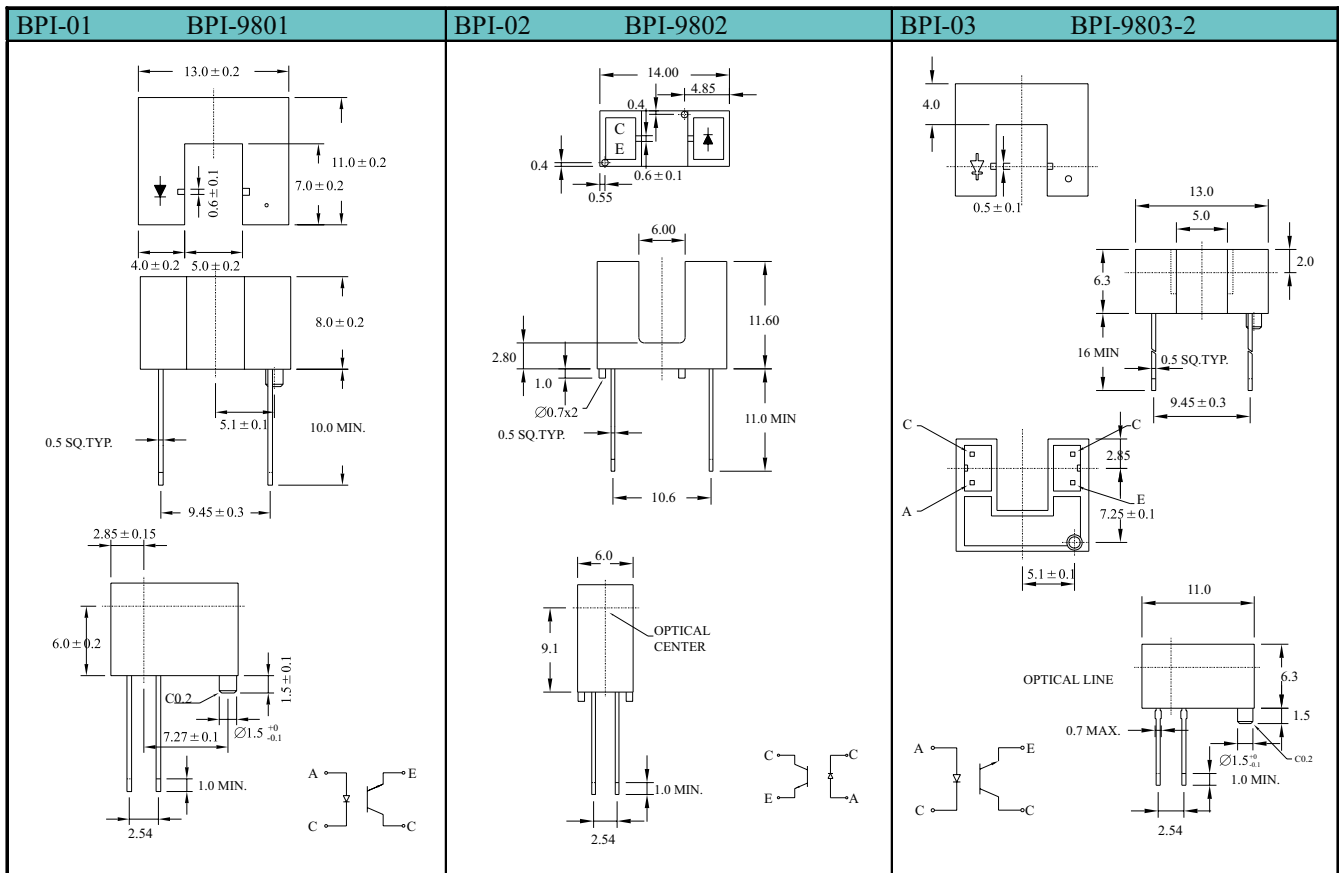
### OUTPUT :

- Collector Power Dissipation ..... Pd=100mW
- Collector Current ..... Ic=40mA Typ.
- Collector-Emitter Breakdown Voltage ..... BVceo=30V Max.
- Emitter - Collector Breakdown Voltage ..... BVeco=5.0V Max.
- Operating Temperature ..... Topr=-30°C~+85°C
- Storage Temperature ..... Tstg=-30°C~+100°C
- Soldering Temperature ..... Tsol=260°C,t=5Sec.

## ELECTRICAL AND RADIANT CHARACTERISTICS (Ta=25°C)

Part No.	Input					Output										Speed				
	Vf If=20mA (V)		Ir Vr=10V (uA)		λ p (nm)	Radiant Power (mw/cm <sup>2</sup> )		Dark Current Iceo(nA) Vce=10V		C-E Saturation Voltage Vce(Sat) Ic=500uA/If=20mA			Collector Light Current IC(mA) Vce=5V,If=20mA			Leakage Current Vce=5V,If=20mA Iceod( uA)			Rise/Fall Time(usec)	
	Typ.	Max.	Min.	Max.	Typ.	Min.	Max.	Min.	Max.	Min.	Typ.	Max.	Min.	Typ.	Max.	Min.	Typ.	Max.	Tr	Tf
BPI-9801																				
BPI-9802	1.2	1.6	-	10	940	1.0	4.5	-	100	-	-	0.4	1.0	2.0	5.0	-	-	20	10	10
BPI-9803-2																				

- BPI-98xxxx (BIR-NM23C1)+(BPT-NP13C1)



- Notes : 1.All Dimensions are in millimeters (inches).  
2.Tolerance is ± 0.25mm (.010").